



garland

With Garland, you are always well connected.™

Data Racks & Accessories Catalogue



DISTRIBUTED BY



Express
madison



About Us.

Garland Cables was established in Melbourne in 1972, and has been a well-known and respected manufacturer of quality cables for over 50 years. With an extensive range of communications, coaxial, data, security, telephone, instrumentation, and fibre cables, Garland provides the backbone for many critical networks throughout Australia.

When you contact Garland, you connect with the designer, manufacturer, importer and distributor, which means we can custom design and manufacture any cable to meet your specific application requirements.

Garland Cables is owned and operated by Madison Group Enterprises and distributed by Madison Express.

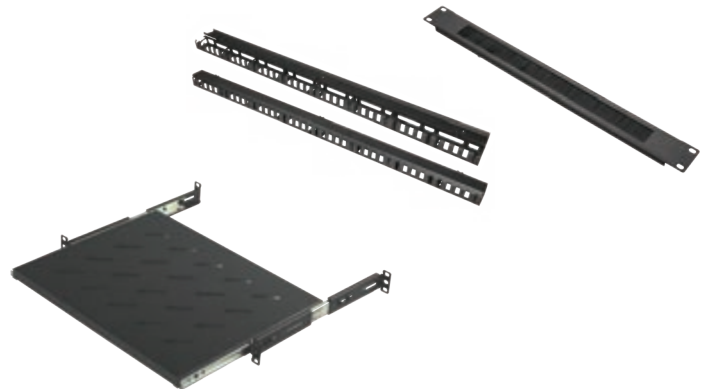
The team at Madison Express work closely with customers, get to know their projects and help find solutions to their connectivity challenges. The support of our customers and suppliers over the years, has allowed us to truly understand our partners' needs and provide professional and friendly service.



Contents

Your trusted expert in Data & Communications Solutions.....	4
Floor Standing Data Racks.....	5
Wall Cabinets & Racks.....	12
Fan Units	14
Blank Panels.....	14
Brush Panels.....	14
Cable Managers	15
Baying Kits	16
19" Shelves.....	16
Drawer	18
Plinths.....	18
Brush Strips.....	19
PDU's.....	19

Your trusted expert in Data & Communications Solutions



Comprehensive Solutions.

The Garland range of racks and accessories have been designed to be flexible and easy to install. The racks come fully assembled and floor racks all have castors and leveling feet allowing easy positioning on-site. Racks come with four entry points on the roof and two on the base as well as removable and lockable side panels plus adjustable rails, making it simple to configure racks to suit your needs.

Floor Standing Data Racks

The Garland range of floor racks come in two different door specs both available in multiple heights, widths and depths. A glass front /metal rear version, and a mesh front/split mesh rear version are available.

All floor racks come fully assembled and include leveling feet, heavy duty castors, shelves, ceiling mounted fan units with thermostat, a PDU and nuts/bolts/washers. All of the Garland floor racks come complete with reversible/lockable doors, removable and lockable side panels, top panel with ventilation holes and four cable entry points, bottom panel with two cable entry points, adjustable rails and have a 1000kg static load limit. A complete range of accessories is available for this these products.



glass door

mesh door

45RU Glass Door, Floor Standing Racks

Part Number	GDR45U600X600FGD	GDR45U600X800FGD	GDR45U600X1000FGD	GDR45U800X1000FGD
Package in cm Width x Depth x Height	65 x 68 x 235	65 x 88 x 235	65 x 108 x 235	85 x 108 x 235
Weight in kg	118.0	138.0	153.0	185.0
2 Fan Tray with Thermostat	1			
4 Fan Tray with Thermostat		1	1	1
Fixed Shelves	3	3	3	3
8 Way PDU	1	1	1	1
Nuts/Bolts/Washers	40	40	40	40
Lockable/Removable Side Panels	2	2	2	2
Lockable/reversible front glass door	1	1	1	1
Lockable/reversible rear metal door	1	1	1	1
Adjustable rails	✓	✓	✓	✓
Static load limit 1,000kg	✓	✓	✓	✓
Vertical Cable Management				2
Baying Tabs	✓	✓	✓	✓
Fully assembled	✓	✓	✓	✓
Castors	✓	✓	✓	✓
Levelling Feet	✓	✓	✓	✓

Floor Standing Data Racks

42RU Glass Door, Floor Standing Racks

Part Number	GDR42U 600X600FGD	GDR42U 600X800FGD	GDR42U 600X1000FGD	GDR42U 800X1000FGD
Package in cm Width x Depth x Height	65 x 68 x 221.5	65 x 88 x 221.5	65 x 108 x 221.5	85 x 108 x 221.5
Weight in kg	113.0	131.0	147.0	178.0
2 Fan Tray with Thermostat	1			
4 Fan Tray with Thermostat		1	1	1
Fixed Shelves	3	3	3	3
8 Way PDU	1	1	1	1
Nuts/Bolts/Washers	40	40	40	40
Lockable/Removable Side Panels	2	2	2	2
Lockable/reversible front glass door	1	1	1	1
Lockable/reversible rear metal door	1	1	1	1
Adjustable rails	✓	✓	✓	✓
Static load limit 1,000kg	✓	✓	✓	✓
Vertical Cable Management				2
Baying Tabs	✓	✓	✓	✓
Fully assembled	✓	✓	✓	✓
Castors	✓	✓	✓	✓
Levelling Feet	✓	✓	✓	✓



Floor Standing Data Racks

37RU & 32RU Glass Door, Floor Standing Racks

Part Number	GDR37U 600X600FGD	GDR32U 600X600FGD	GDR32U 600X800FGD	GDR32U 600X1000FGD
Package in cm Width x Depth x Height	65 x 68 x 199.5	65 x 68 x 177	65 x 88 x 177	65 x 108 x 177
Weight in kg	102.0	93.0	109.0	121.0
2 Fan Tray with Thermostat	1	1		
4 Fan Tray with Thermostat			1	1
Fixed Shelves	2	2	2	2
8 Way PDU	1	1	1	1
Nuts/Bolts/Washers	20	40	40	40
Lockable/Removable Side Panels	2	2	2	2
Lockable/Reversible Front Glass Door	1	1	1	1
Lockable/Reversible Rear Metal Door	1	1	1	1
Adjustable Rails	✓	✓	✓	✓
Static Load Limit 1,000kg	✓	✓	✓	✓
Baying Tabs	✓	✓	✓	✓
Fully Assembled	✓	✓	✓	✓
Castors	✓	✓	✓	✓
Leveling Feet	✓	✓	✓	✓



Floor Standing Data Racks

27RU Glass Door, Floor Standing Racks

Part Number	GDR27U 600X600FGD	GDR27U 600X800FGD
Package in cm Width x Depth x Height	65 x 68 x 155	65 x 88 x 155
Weight in kg	81.0	94.0
2 Fan Tray with Thermostat	1	
4 Fan Tray with Thermostat		1
Fixed Shelves	1	1
8 Way PDU	1	1
Nuts/Bolts/Washers	20	20
Lockable/Removable Side Panels	2	2
Lockable/Reversible Front Glass Door	1	1
Lockable/Reversible Rear Metal Door	1	1
Adjustable Rails	✓	✓
Static Load Limit 1,000kg	✓	✓
Baying Tabs	✓	✓
Fully Assembled	✓	✓
Castors	✓	✓
Leveling Feet	✓	✓



Floor Standing Data Racks

22RU & 18RU Glass Door, Floor Standing Racks

Part Number	GDR22U 600X600FGD	GDR22U 600X800FGD	GDR22U 600X1000FGD	GDR18U 600X600FGD	GDR18U 600X800FGD
Package in cm Width x Depth x Height	65 x 68 x 132.5	65 x 88 x 132.5	65 x 108 x 132.5	65 x 68 x 115	65 x 88 x 115
Weight in kg	74.0	85.0	94.0	66.0	77.0
2 Fan Tray with Thermostat	1			1	
4 Fan Tray with Thermostat		1	1		1
Fixed Shelves	1	1	1	1	1
8 Way PDU	1	1	1	1	1
Nuts/Bolts/Washers	20	20	20	20	20
Lockable/Removable Side Panels	2	2	2	2	2
Lockable/Reversible Front Glass Door	1	1	1	1	1
Lockable/Reversible Rear Metal Door	1	1	1	1	1
Adjustable Rails	✓	✓	✓	✓	✓
Static Load Limit 1,000kg	✓	✓	✓	✓	✓
Baying Tabs	✓	✓	✓	✓	✓
Fully Assembled	✓	✓	✓	✓	✓
Castors	✓	✓	✓	✓	✓
Leveling Feet	✓	✓	✓	✓	✓



Floor Standing Data Racks

45RU Mesh Door, Floor Standing Racks

Part Number	GDR45U 600X600FMD	GDR45U 600X800FMD	GDR45U 600X1000FMD	GDR45U 800X800FMD	GDR45U 800X1000FMD
Package in cm Width x Depth x Height	65 x 68 x 235	65 x 88 x 235	65 x 108 x 235	85 x 88 x 235	85 x 108 x 235
Weight in kg	110.0	128.0	144.0	154.0	171.0
2 Fan Tray with Thermostat	1				
4 Fan Tray with Thermostat		1	1	1	1
Fixed Shelves	3	3	3	3	3
8 Way PDU	1	1	1	1	1
Nuts/Bolts/Washers	40	40	40	40	40
Lockable/Removable Side Panels	2	2	2	2	2
Lockable/Reversible Front Mesh Door	1	1	1	1	1
Lockable Rear Mesh Split Doors (set)	1	1	1	1	1
Adjustable Rails	✓	✓	✓	✓	✓
Static Load Limit 1,000kg	✓	✓	✓	✓	✓
Vertical Cable Management				2	2
Baying Tabs	✓	✓	✓	✓	✓
Fully Assembled	✓	✓	✓	✓	✓
Castors	✓	✓	✓	✓	✓
Leveling Feet	✓	✓	✓	✓	✓



Floor Standing Data Racks

42RU Mesh Door, Floor Standing Racks

Part Number	GDR42U 600X600FMD	GDR42U 600X800FMD	GDR42U 600X1000FMD	GDR42U 800X800FMD	GDR42U 800X1000FMD
Package in cm Width x Depth x Height	65 x 68 x 221.5	65 x 88 x 221.5	65 x 108 x 221.5	85 x 88 x 221.5	85 x 108 x 221.5
Weight in kg	105.0	124.0	140.0	148.0	165.0
2 Fan Tray with Thermostat	1				
4 Fan Tray with Thermostat		1	1	1	1
Fixed Shelves	3	3	3	3	3
8 Way PDU	1	1	1	1	1
Nuts/Bolts/Washers	40	40	40	40	40
Lockable/Removable Side Panels	2	2	2	2	2
Lockable/Reversible Front Mesh Door	1	1	1	1	1
Lockable Rear Mesh Split Doors (set)	1	1	1	1	1
Adjustable Rails	✓	✓	✓	✓	✓
Static Load Limit 1,000kg	✓	✓	✓	✓	✓
Vertical Cable Management				2	2
Baying Tabs	✓	✓	✓	✓	✓
Fully Assembled	✓	✓	✓	✓	✓
Castors	✓	✓	✓	✓	✓
Leveling Feet	✓	✓	✓	✓	✓



Wall Cabinets & Racks

Garland Wall Racks

The Garland wall racks come in a range of sizes and depths, some versions include a reversible swing frame. All come with a fixed shelf, nuts/bolts/washers, a lockable door & lockable/removable side panels for easy access. The racks come equipped with castor mounting plates (castors optional extra) and roof vents to suit the optional fan.

18RU Glass Door Wall Racks

Part Number	GDR18U 600X450WGD	GDR18U 600X550WGDS	GDR18U 600X600WGDS
Package in cm Width x Depth x Height	62.5 x 49 x 93	64.5 x 59.5 x 96	64.5 x 64.5 x 96
Weight in kg	29.6	42.8	43.8
Swing Frame - Reversible		✓	✓
Fixed Shelf	2	2	2
Nuts/Bolts/Washers	24	24	24
Lockable Door	✓	✓	✓
Lockable Removable Side Panels	2	2	2
Castor Mounting Plates	✓	✓	✓
Roof Vents	✓	✓	✓



12RU Glass Door Wall Racks

Part Number	GDR12U 600X450WGD	GDR12U 600X550WGDS	GDR12U 600X600WGD	GDR12U 600X600WGDS
Package in cm Width x Depth x Height	62.5 x 49 x 66.5	64.5 x 59.5 x 69.5	62.5 x 62.5 x 66.5	64.5 x 64.5 x 69.5
Weight in kg	25	31.3	29.7	33.8
Swing Frame - Reversible		✓		✓
Fixed Shelf	1	1	1	1
Nuts/Bolts/Washers	12	12	12	12
Lockable Door	✓	✓	✓	✓
Lockable Removable Side Panels	2	2	2	2
Castor Mounting Plates	✓	✓	✓	✓
Roof Vents	✓	✓	✓	✓

9RU Glass Door Wall Racks

Part Number	GDR9U 600X450WGD	GDR9U 600X550WGDS	GDR9U 600X600WGD	GDR9U 600X600WGDS
Package in cm Width x Depth x Height	62.5 x 49 x 53.5	64.5 x 59.5 x 56	62.5 x 62.5 x 53.5	64 x 64 x 56
Weight in kg	21.8	27	26.2	29.6
Swing Frame - Reversible		✓		✓
Fixed Shelf	1	1	1	1
Nuts/Bolts/Washers	12	12	12	12
Lockable Door	✓	✓	✓	✓
Lockable Removable Side Panels	2	2	2	2
Castor Mounting Plates	✓	✓	✓	✓
Roof Vents	✓	✓	✓	✓



Wall Cabinets & Racks

6RU Glass Door Wall Racks

Part Number	GDR6U 600X450WGD	GDR6U 600X550WGDS	GDR6U 600X600WGD	GDR6U 600X600WGDS
Package in cm Width x Depth x Height	62.5 x 49 x 40	64.5 x 59.5 x 43	62.5 x 62.5 x 40	64.5 x 64.5 x 43
Weight in kg	19	23	22.7	25.6
Swing Frame - Reversible		✓		✓
Fixed Shelf	1	1	1	1
Nuts/Bolts/Washers	12	12	12	12
Lockable Door	✓	✓	✓	✓
Lockable Removable Side Panels	2	2	2	2
Castor Mounting Plates	✓	✓	✓	✓
Roof Vents	✓	✓	✓	✓



Patch Panel Wall Cabinets

Patch Panel wall cabinets available in 3 sizes. These cabinets include 19" mounting rails and include a lockable glass door. A great solution where patch panels need to be mounted in an area with limited space.

2RU, 4RU & 6RU Glass Door Wall Cabinets

Part Number	GDR2U 540X360W	GDR4U 540X360W	GDR6U 540X360W
Package in cm Width x Depth x Height	56.5 x 38.5 x 13.5	56.5 x 38.5 x 23	56.5 x 38.5 x 31.5
Weight in kg	7.4	9.0	11.5
Size	2RU	4RU	6RU
Lockable Door	✓	✓	✓



Fan Units

Two fan tray units suitable for Garland wall and floor racks. Complete with Thermostat and 1.8mtr cord.

Part Number	GDRFAN2T 483X140	GDRFAN2
Package in cm Width x Depth x Height	48.3 x 17 x 4.4	35 x 13.5 x 4.2
Weight in kg	3.4	10.5
Wall Rack Fan		✓
Floor Rack Fan	✓	
2 Fan Tray	✓	✓
Thermostat	✓	✓



Blank Panels



19" blanking panels available in a range of sizes and mounting styles.

Part Number	GDRBLANK 1UTLP	GDRBLANK 1UBK	GDRBLANK 2UBK	GDRBLANK 3UBK	GDRBLANK 4UBK	GDRBLANK 1UTL	GDRBLANK 2UTL
Package in cm Width x Depth x Height	48.3 x 2.8 x 4.4	48.3 x 1.0 x 4.4	48.3 x 1.0 x 8.8	48.3 x 1.0 x 13.3	48.3 x 1.0 x 17.7	48.3 x 1.0 x 4.4	48.3 x 1.0 x 8.8
Weight in kg	0.1	0.3	0.5	0.7	0.8	0.3	0.5
Size	1RU	1RU	2RU	3RU	4RU	1RU	2RU
Tool-less Mounting						✓	✓
Metal		✓	✓	✓	✓	✓	✓
Plastic	✓						

Brush Panels

19" brush panel available as standard bolt mount, or tool-less.

Part Number	GDRBRUSHIU	GDRBRUSHIUTL
Package in cm Width x Depth x Height	48.3 x 1.1 x 4.4	48.3 x 1.1 x 4.4
Weight in kg	0.3	0.3
Size	1RU	1RU
Tool-less Mounting		✓



Cable Managers



Horizontal management

19" Horizontal cable management, available in various styles and sizes.

Part Number	GDR MANAGER 1UHD	GDR MANAGER 2UHD	GDR MANAGER 1U	GDR MANAGER 2U	GDR MANAGER 1U DUCT	GDR MANAGER 2U DUCT
Package in cm Width x Depth x Height	48.3 x 11.3 x 4.4	48.3 x 11.3 x 8.8	48.3 x 8.0 x 4.4	48.3 x 8.0 x 8.8	48.3 x 7.0 x 4.4	48.3 x 7.0 x 8.8
Weight in kg	0.9	1.4	0.4	0.7	0.7	1.1
Size	1RU	2RU	1RU	2RU	1RU	2RU
High Density	✓	✓				
Five Ring			✓	✓		
Duct Style					✓	✓

Vertical Management

Vertical cable manager suitable for 800w Garland racks.



Part Number	GDRVCM1U 860X70	GDRVCM2U 860X70	GDRVCM1U 860X95	GDRVCM2U 860X95
Package in cm Width x Depth x Height	4.8 x 8.8 x 86.4	9.2 x 8.8 x 86.4	4.9 x 6.3 x 86.4	8.8 x 6.3 x 86.4
Weight in kg	1.8	3.3	2.1	3.7
Size	1RU	2RU	1RU	2RU
Cable Rings	✓	✓		
Cable Duct			✓	✓
Qty	2pc	2pc	2pc	2pc

Vertical Management for Garland Floor Racks

Vertical cable managers to suit Garlands range of 800W racks. Available in sizes to suit 18RU, 27RU, 42RU and 45RU.

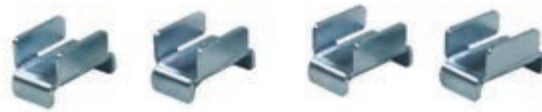


Part Number	GDR18UVCM	GDR27UVCM	GDR42UVCM	GDR45UVCM
Package in cm Width x Depth x Height	9.4 x 6.9 x 80.2	9.4 x 6.9 x 120.2	9.4 x 6.9 x 186.9	9.4 x 6.9 x 200.2
Weight in kg	3.9	5.4	8.2	8.9
Size	18RU	27RU	42RU	45RU
Qty	2pc	2pc	2pc	2pc
Hinged Cover	✓	✓	✓	✓

Baying Kits

Garland floor racks are supplied with baying tabs.
4 pieces per set.

Part Number	GDRBAYKIT4
Package in cm Width x Depth x Height	10.0 x 5.0 x 2.0
Weight in kg	0.1



19" Shelves

19" mounted shelves in various configurations, from cantilever, to fixed, and sliding. A range of the fixed and sliding shelves are also adjustable.



Cantilever

Part Number	GDRSHELF1U CANT300	GDRSHELF1U CANT350	GDRSHELF2U CANT300	GDRSHELF2U CANT350
Package in cm Width x Depth x Height	48.3 x 30 x 4.4	48.3 x 35 x 4.4	48.3 x 30 x 8.8	48.3 x 35 x 8.8
Weight in kg	1.9	2.1	2.0	2.5
Size	1RU	1RU	2RU	2RU

Fixed

Part Number	GDRSHELF FIXED350	GDRSHELF FIXED550	GDRSHELF FIXED650	GDRSHELF FIXED710	GDRSHELF FIXED750
Package in cm Width x Depth x Height	47 x 35 x 4.8	47 x 55 x 4.8	47.0 x 65 x 4.8	47 x 71 x 4.8	47 x 75 x 4.8
Weight in kg	2.4	3.4	4.0	4.2	4.8
Size	1RU	1RU	1RU	1RU	1RU

Sliding

Part Number	GDRSHELF SLIDING35	GDRSHELF SLIDING55	GDRSHELF SLIDING65	GDRSHELF SLIDING71	GDRSHELF SLIDING75
Package in cm Width x Depth x Height	47 x 35 x 5.6	47 x 55 x 5.6	47.0 x 65 x 5.6	47 x 71 x 5.6	47 x 75 x 5.6
Weight in kg	3.2	4.4	4.7	4.8	5.0
Size	1RU	1RU	1RU	1RU	1RU

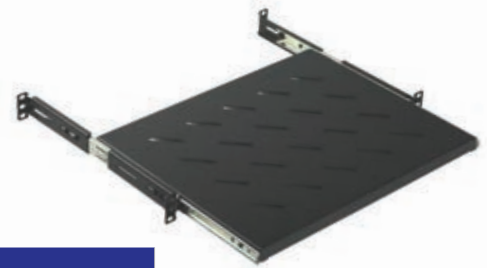


19" Shelves



Adjustable - Fixed

Part Number	GDRSHELF ADJ35X60	GDRSHELF ADJ55X80	GDRSHELF ADJ65X100	GDRSHELF ADJ75X120
Package in cm Width x Depth x Height	48.8 x 35 x 4.4	48.8 x 55 x 4.4	48.8 x 65 x 4.4	48.8 x 75 x 4.4
Weight in kg	3.1	4.7	5.1	5.6
Size	1RU	1RU	1RU	1RU
Adjustment Details in cm	35-41	55-73	65-83	75-93



Adjustable - Sliding

Part Number	GDRSHELF AD35X60S	GDRSHELF AD55X80S	GDRSHELF AD65X100S	GDRSHELF AD75X120S
Package in cm Width x Depth x Height	48.8 x 35 x 4.4	48.8 x 55 x 4.4	48.8 x 65 x 4.4	48.8 x 75 x 4.4
Weight in kg	3.0	4.1	4.8	5.1
Size	1RU	1RU	1RU	1RU
Adjustment Details in cm	35-56	55-88	65-97	75-107



Drawer

2U Drawer

Part Number	GDRDRAWER2U350LK
Package Length in cm	48.3
Package Width in cm	35
Package Height in cm	8.8
Weight in kg	7.2



Plinths

Garland floor plinths are manufactured to suit the floor rack range. Available in multiple configurations.

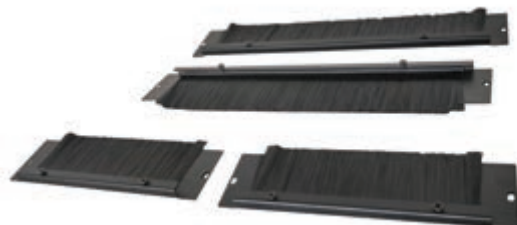
Part Number	GDRPLNTH 60X100X10	GDRPLNTH 60X60X10	GDRPLNTH 60X80X10	GDRPLNTH 80X100X10	GDRPLNTH 80X80X10
Package in cm Width x Depth x Height	60 x 100 x 10	60 x 60 x 10	60 x 80 x 10	80 x 100 x 10	80 x 80 x 10
Weight in kg	11.7	9.2	10.5	14.5	13.2



Brush Strips

This brush strip range is suitable for the Garland floor standing racks. The GDRBRUSH600 suits 600 deep racks and includes 2 x 35.8x5.6x1.1 and 2 x 21.5x5.6x1.1 brush strips. The GDRBRUSH800 suits 800/1000 deep racks and includes 4 x 35.8x5.6x1.1 brush strips.

Part Number	GDRBRUSH600	GDRBRUSH800
Package in cm Width x Depth x Height	37 x 7.5 x 7.5	37 x 7.5 x 7.5
Weight in kg	0.55	0.65
Qty	4pc	4pc



PDU's

The Garland PDU products are horizontal mounting to suit 19" racks. They are 10A with overload protection and a switch, with 3Mtrs of cable.

Part Number	GDRPDU6-10A-S-OL	GDRPDU8-10A-S-OL
Package in cm Width x Depth x Height	50.5 x 9.2 x 5.5	50.5 x 9.2 x 5.5
Weight in kg	1.0	1.1
Size	1RU	1RU
Overload protection	✓	✓
Switch	✓	✓
10A	✓	✓
Outlets	6	8



Build your Green Star PVC Credits with Garland Pro Series Cables

pro series

Industrial / Power / Data / Security / Fibre

pvc MADE USING
BEST ENVIRONMENTAL
PRACTICE™

Garland Pro Series copper cables, the first communications and data cable accredited by the Vinyl Council of Australia.

- LAN & Data
- Security & Fire Control
- Coaxial
- Telephone
- Instrumentation & Control
- Audio Visual



garland

Sales Enquiries 1800 66 99 99

www.garlandcables.com.au